

RECEIVED  
LARAMIE COUNTY  
CHEYENNE, WY.

CERTIFIED LAND CORNER RECORDATION <sup>1989</sup> JAN 20 PM 3 05

DESCRIPTION OF CORNER EVIDENCE FOUND, AND ORIGINAL RECORD (if known)

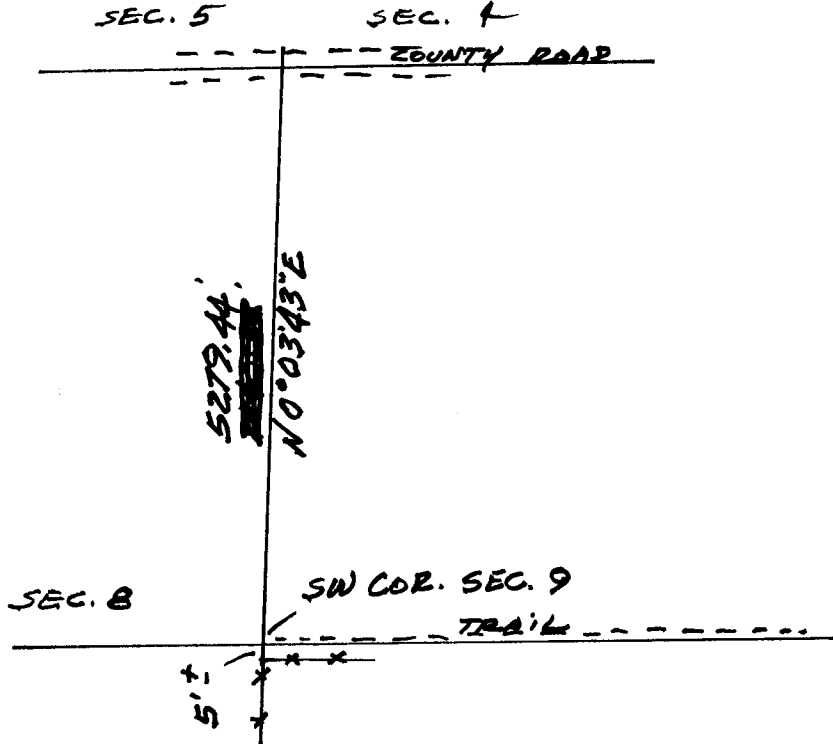
FOUND MARKED STONE AT SW COR. OF SECTION 9  
T. 14 N., R. 64 W., 6<sup>TH</sup> P.M. LARAMIE COUNTY, WY.

DESCRIPTION OF MONUMENT AND ACCESSORIES ESTABLISHED  
TO PERPETUATE THE ORIGINAL LOCATION OF THIS CORNER:

STONE WAS RED COLOR & HAD A "T" BAR DRIVEN IN  
THE GROUND AT THE NORTH SIDE - WE CAME BACK  
THE NEXT DAY FOR A MEASUREMENT & THE "T" BAR  
HAD BEEN REMOVED & THE ROCK USED TO PROP-UP A  
"NO HUNTING - NO TRESPASSING" SIGN - SIGNED LABEL WITH.  
WE PLACED A REBAR WHERE WE FOUND THE STONE

SKETCH, WITH COURSE AND DISTANCE TO ADJACENT CORNER IF DETERMINED IN THIS SURVEY.

(May Sketch or Paste Reproduction on Reverse Side.)



I, Donald G. Hopkins certify that I have carefully performed or reviewed the work done on the diagrammed corner as reported on this recordation form and approve the same.

Donald G. Hopkins  
Signature of Surveyor Registration No.

STATE OF WYOMING,  
Office of Clerk and Recorder,  
County of LARAMIE

This "corner record" was filed for record on the \_\_\_\_\_ day of \_\_\_\_\_, 19\_\_\_\_, was noted on the cross-index plat and is assigned page No. \_\_\_\_\_, in book No. \_\_\_\_\_.

County Official			
Cross Index No. <u>J-9</u>	T. <u>14</u>	R. <u>64</u>	Mer.
_____	T. _____	R. _____	Mer.
_____	T. _____	R. _____	Mer.
_____	T. _____	R. _____	Mer.
_____	T. _____	R. _____	Mer.
_____	T. _____	R. _____	Mer.
_____	T. _____	R. _____	Mer.